



### Key features of the new Motorway

- Six lanes (three southbound and three northbound) will be provided between the Gateway bridges, Airport interchange and to just south of Nudgee Road.
- New south-facing on-ramps and off-ramps will be constructed where the new Motorway intersects with Kingsford Smith Drive, providing enhanced City access.
- The new Airport interchange links with Moreton Drive, a new access road being built by the Brisbane Airport Corporation, which will provide a second route to the domestic and international terminals.

### Additional features

- Intelligent Transport Systems (ITS) for a 'Motorway that thinks'.
- Urban design incorporating extensive landscaping.
- Wider road shoulders for vehicle breakdowns.
- Additional emergency services crossovers.
- Emergency telephones positioned every kilometre along the Motorway.

### Benefits to motorists

- The new Motorway will reduce vehicles on the Gateway Motorway between Eagle Farm, Airport Drive and Banyo, providing faster and more efficient north-south travel.
- The new Airport interchange will enhance access to the Brisbane Airport.



Visit the Gateway Upgrade Project Community Information Centre – 1051 Lytton Road, Murarrie

(behind the Queensland Motorways Customer Service Centre)

Open Monday – Friday, 8.30am to 5.30pm and Saturday, 10am to 2pm

For more information

1800 700 525

[www.gatewayupgradeproject.com.au](http://www.gatewayupgradeproject.com.au)

[enquiries@gatewayupgradeproject.com.au](mailto:enquiries@gatewayupgradeproject.com.au)



The Gateway Upgrade Project is a Queensland Government initiative being delivered by Queensland Motorways with design and construction by the Leighton Abigroup Joint Venture.



Fact Sheet 9

### As part of the Gateway Upgrade Project, 7km of new Motorway is being constructed north of the Brisbane River to improve north-south connections and offer a more direct route to the Airport.

Once complete, motorists will experience improved travel times between the Gateway Bridge, Brisbane Airport and Nudgee Road.

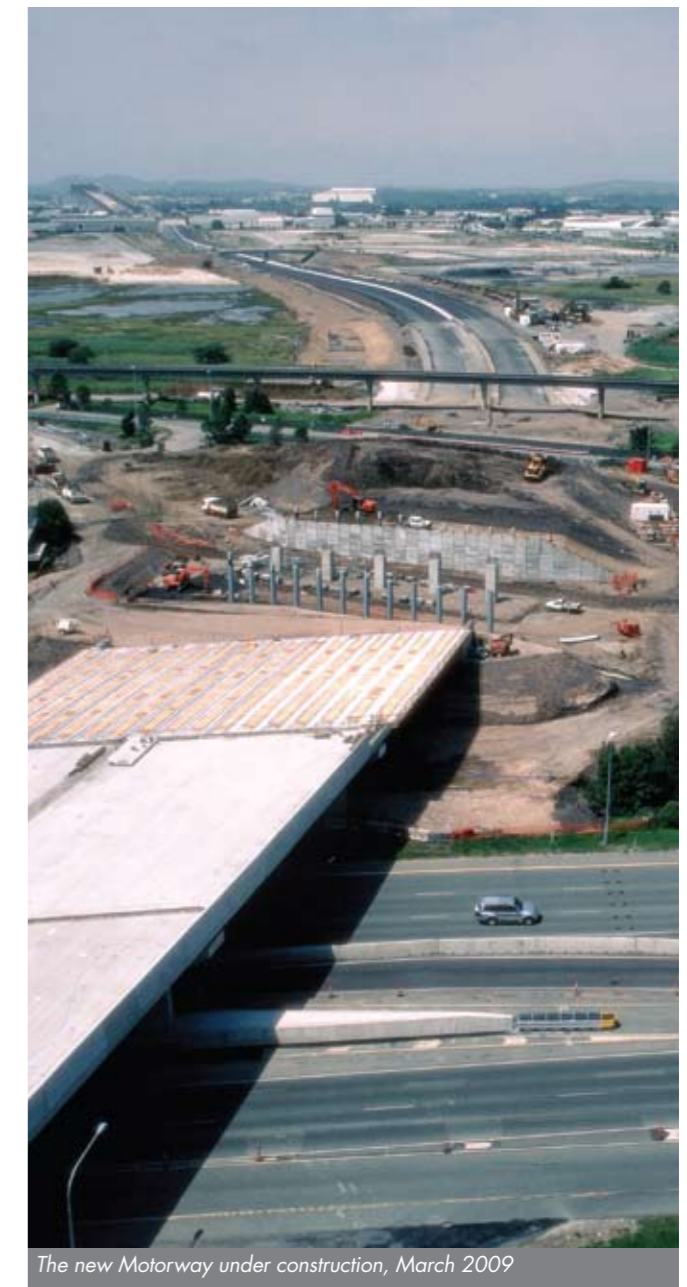
Currently, when travelling to and from the Gateway Bridge, motorists must use the existing Gateway Motorway, which veers west through Eagle Farm. The existing Motorway was built this way because the old Airport runway blocked the more direct route.

### Brisbane's newest Motorway

- The Motorway begins at the northern end of the Gateway bridges, Eagle Farm. Catering for both southbound and northbound traffic, it crosses through Eagle Farm, passing over Lavarack Avenue, Kingsford Smith Drive and Pinkenba rail line.
- Continuing north through Airport land currently being developed as TradeCoast Central, the new Motorway passes under Airtrain and over Airport Drive. It then connects with a new Airport interchange.
- The new Airport interchange connects with Moreton Drive, a new access road being built by the Brisbane Airport Corporation, which will provide a second route to the domestic and international terminals.
- The Motorway continues over Kedron Brook, rejoining the existing Gateway Motorway just south of Nudgee Road.

See the back page of this fact sheet for information about the key features and benefits the new Motorway will deliver.

Four lanes of the new Motorway will be opened in mid-2009. All six lanes will be opened in by 2010..



For more information

1800 700 525

[www.gatewayupgradeproject.com.au](http://www.gatewayupgradeproject.com.au)

[enquiries@gatewayupgradeproject.com.au](mailto:enquiries@gatewayupgradeproject.com.au)

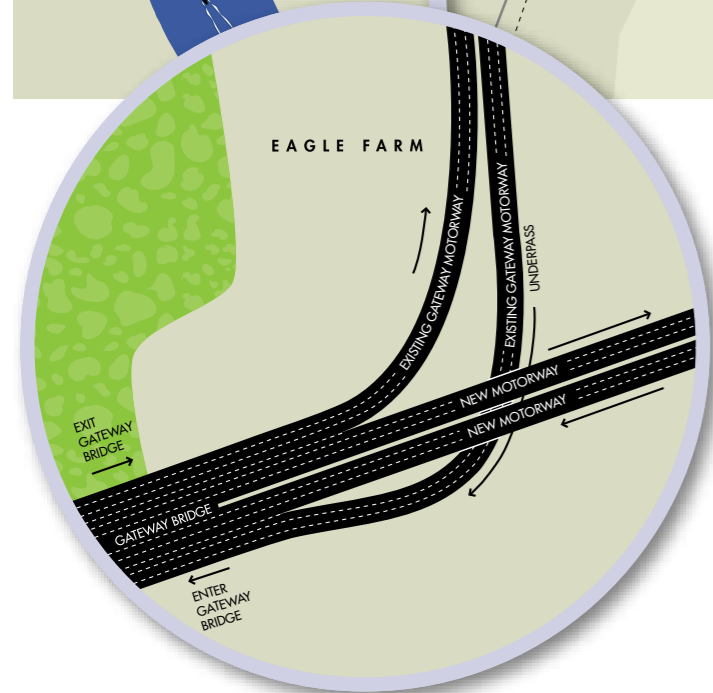


The Gateway Upgrade Project is a Queensland Government initiative being delivered by Queensland Motorways with design and construction by the Leighton Abigroup Joint Venture.



# 7km of new Motorway north of the Brisbane River

To provide an uninterrupted journey new interchanges are being constructed, ensuring full connectivity.



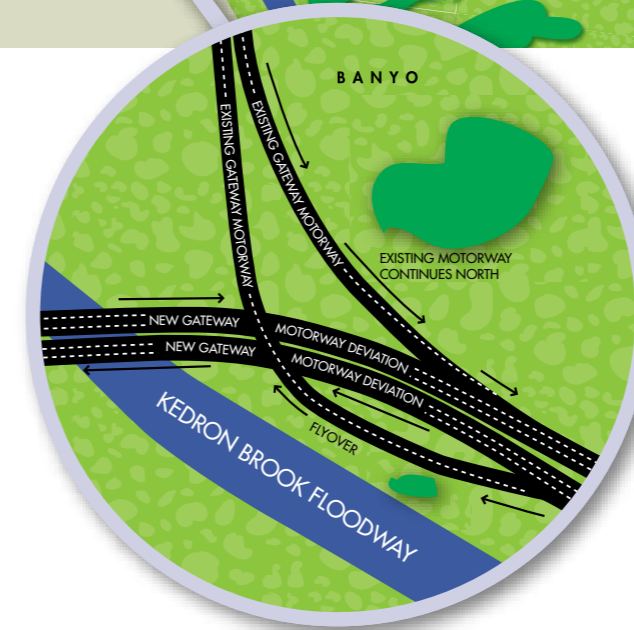
## Just north of the Gateway bridges

Providing the option to travel the existing Gateway Motorway to the City and inner northern suburbs, or the new Gateway Motorway direct to the Airport or Sunshine Coast.



## New airport interchange

Linking with Moreton Drive, a new access road being built by the Brisbane Airport Corporation, which will provide a second route to the domestic and international terminals and relieve traffic congestion at the existing Airport roundabout.



## South of Nudgee Road, Banyo

The new Motorway and existing Gateway Motorway meet, with the option to travel either route.

## Choose your journey

Depending on their destination, motorists can choose to travel on the existing Gateway Motorway or the new 7km Motorway. Both routes will provide easy and efficient northbound and southbound travel and access to the Airport.

### Motorists would use the existing Gateway Motorway for:

- Travel between the Gateway bridges and Eagle Farm West.
- Travel between the Gateway bridges and the City.
- Travel to Banyo, Toombul and the City.

### Motorists would use the new Motorway for:

- Travel to and from the Gold or Sunshine Coasts.
- Travel to and from Brisbane Airport.
- Travel to Pinkenba via the new Kingsford Smith Drive ramp.



A new flyover bridge under construction at Banyo will provide access to the existing Gateway Motorway from the new Motorway.



Two million cubic metres of fill and embankment materials have been transported into the site.

## FAST FACTS

- The mostly-elevated Motorway requires construction of some 17 bridges using 65,000m<sup>2</sup> of bridge decking, 850 super-tee beams and 40km worth of pre-stressed concrete piles.
- Approximately 200,000 tonne of asphalt and 200,000 tonne of road base material is being used to construct the new Motorway.